

Light efficiency:

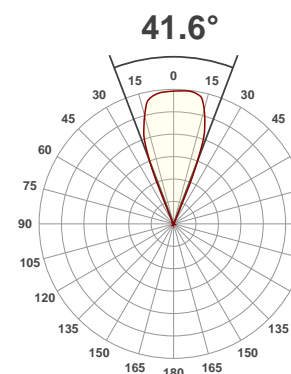
75 Lumen/Watt

Light quality:

CRI: 90.3

Color temperature:

5686 K

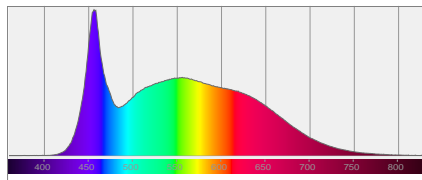


Product name:
CW Profile HP

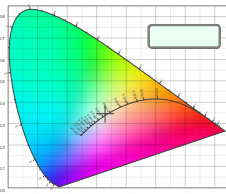
Test:
50Deg Zoom Out
Date:
9/7/2017

Output: 11100 lm Power consumption: 149 W Peak: 28256 cd

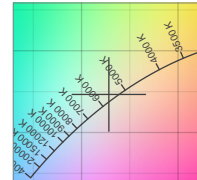
Spectral distribution



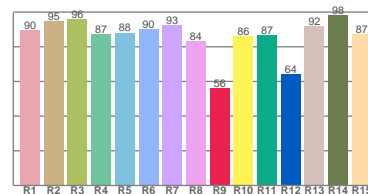
Color coordinates



Zoom color point

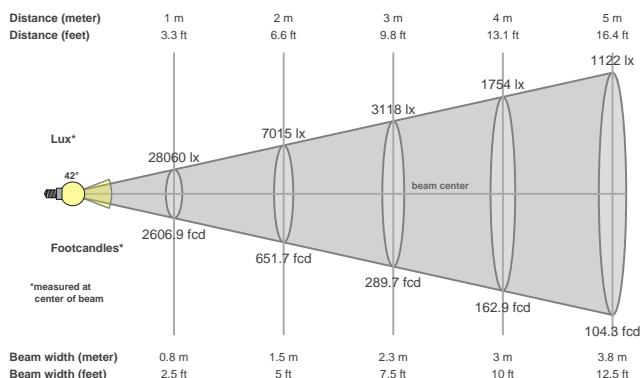


CRI R values



Color temperature	Color rendering index	Red component	Color fidelity	Color gamut	Color quality scale	Color coordinate cie 1931	Color coordinate cie 1931	Color coordinate	Color coordinate	Color divition from black body
CCT	CRI	CRI R9	TM30 Rf	TM30 Rg	CQS	x	y	u	v	Δuv
5686 K	90.3	56.2	86.2	95.3	88.2	0.328	0.347	0.202	0.320	0.0014

Beam details



Beam angles

Beam angle 50%	Field angle 10%	Cutoff angle 2,5%
41.6°	47.5°	50.9°

Beam intensities

Peak intensity	Int. ratio in 120° cone	Int. ratio in 90° cone
28256 cd	98.3%	98.2%

Power

Power	Power factor	Power frequency
149 W	1.0	60.1 Hz

Nominal voltage	Voltage	Current
230 V	112 V	1.33 A

Beam intensities from 1-20m

1m	2m	3m	4m	5m	6m	7m	8m	9m	10m	11m	12m	13m	14m	15m	16m	17m	18m	19m	20m
3.3ft	6.6ft	9.8ft	13.1ft	16.4ft	19.7ft	23ft	26.2ft	29.5ft	32.8ft	36.1ft	39.4ft	42.7ft	45.9ft	49.2ft	52.5ft	55.8ft	59.1ft	62.3ft	65.6ft
28060lx	7015lx	3118lx	1754lx	1122lx	779lx	573lx	438lx	346lx	281lx	232lx	195lx	166lx	143lx	125lx	110lx	97lx	87lx	78lx	70lx
2606.9fcd	651.7fcd	289.7fcd	162.9fcd	104.3fcd	72.4fcd	53.2fcd	40.7fcd	32.2fcd	26.1fcd	21.5fcd	18.1fcd	15.4fcd	13.3fcd	11.6fcd	10.2fcd	9fcd	8fcd	7.2fcd	6.5fcd